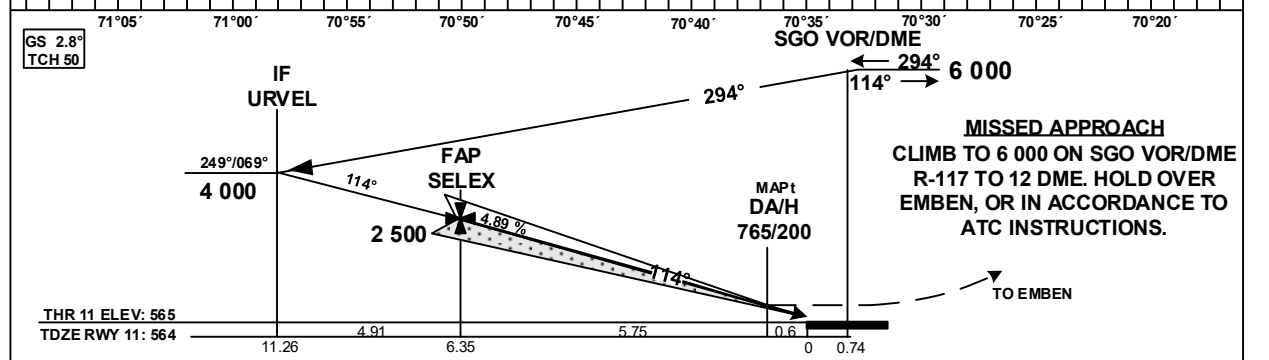
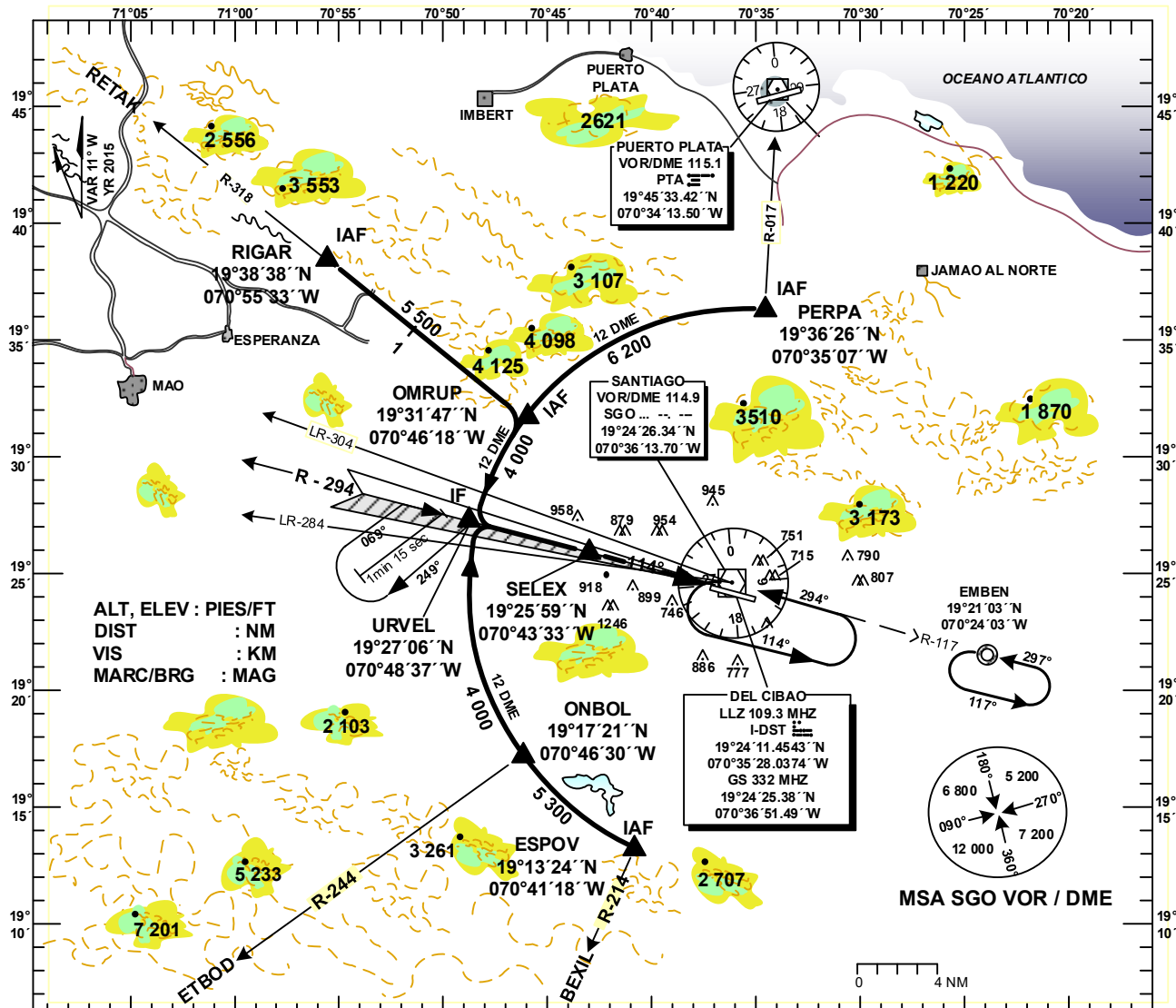


**INSTRUMENT
APPROACH CHART
IAC**

**AD ELEV
565 FT**

**TWR 118.3
APP 119.0
ACC 124.3**

**SANTIAGO, R.D.
DEL CIBAO INT'L
ILS/DME RWY 11**



MDA/H, CEILING, AND VISIBILITY MINIMUMS: TAKE-OFF AND LANDING					Gnd SPEED - KTS					
CATEGORY	A	B	C	D	70	90	100	120	140	160
STRAIGHT-IN RWY 11	DA(H) 765 (200) 1.2				346	446	495	593	693	792
LOC (GS out) RWY 11	1 170 (605)	700 1.6	1 170(605) 700 2.4	1 170(605) 700 2.8	FAP to THR: 6.35	5:26	4:14	3:49	3:11	2:43
CIRCLING	1 200(635) 700 1.9	1 280(715) 800 2.8	1 660(1095)	1100 4.8						

MDST ILS-11 PROCEDURE DATA					
PUNTO DE REF/ TERMINAL FIX		GEO. COOD	MARCACION (TRUE/MAG)	DIST. NM	GRAD.DESC
IAF:	PERPA	19°36'26.30''N 070°35'06.83''W	12 DME ARC	17.34	NIL
IAF;	ESPOV	19°13'23.86''N 070°41'18.07''W	12 DME ARC	16.76	NIL
IAF:	OMRUP	19°31'47.04''N 070°46'17.66''W	12 DME ARC	5.03	NIL
IF:	URVEL	19°27'06.28''N 070°48'36.79''W	103.00°/114.37°	4.91	NIL
FAP:	SELEX	19°25'58.90''N 070°43'33.25''W	103.00°/114.37°	6.35	4.89%2.8°
MAPt:	0.6 I-DME	19°24'44.49''N 070°37'36.58''W	103.00°/114.37°	1.34 DME SGO	NIL
TP		NIL	NIL	NIL	NIL
MAHF:	EMBEN	19°21'03.20''N 070°24'02.81''W	OB: 105.63°/117.0° IB: 285.63°/297.0°	NIL	NIL